



Sedan Machines





SMS-1



6 -
7 8 -

150 /

6,7 8 :

30

	564 x 615 x 554
	73
	150
	0,55KW



SMS-2



6 -
7 8 -

6 ,7 8 :

150 /

30

	564 x 615 x 554
	73
	150
	0,55KW



SMSF-2

(Inox)

0,7

0,75kW



150 /

7

8

30

	564 x 615 x 554
	85
	150
	0,75KW



SMK-1

()

30 x 30

20 x 20
15 x 15 , 25 x 25

120-150 /
35 40



	564 x 615 x 554
	80
	150
	0,75KW

()



SMK-2

(Inox)

15 x 15 , 25 x 25 30 x 30 20 x 20

120-150 /

35 40

	564 x 615 x 554
	80
	150
	0,55KW

	3000 x 500 x 900
	80
	0,37KW

- SMKF-1



SMKF-1

(Inox)

-5°C,

20 x 20 , 25 x 25
15 x 15

120-150 /

40



	564 x 615 x 554
	80
	150
	0,55KW

- SMKF-2 ()



SMKF-2

(Inox)

12x12 , 15x15 , 17x17 , 20x20
 40 120-150 /

	564 x 615 x 554
	80
	150
	0,75KW

	3000 x 500 x 900
	80
	0,37KW



850

4000 x 900 x

(Inox) PVC

1

	0,37 kW, 31 / , 95 Nm
	100
	4000 x 900 x 850
	0,37KW

()



()

INOX

	1.000 / ()
	3.200
	800
	1.200
	2,2KW
	380V/50Hz

()

()



()

INOX

	1.000 / ()
	3.200
	800
	1.200
	2,2KW
	380V/50Hz



2 1

()

()

INOX

	1.000 / ()
	3.200
	800
	1.200
	2,2KW
	380V/50Hz



YES SEDAK

	100
	1600 x 950 x 1400
	0,37KW



() : 4
: 1

(,) .

	200
	1000
	1600
	860-1380
	0,53KW
	(0-1500 /)



50



100



200



(Inox)

PVC

: 50 , 100 200

	50 200
	1,0 – 1,6
	0,95
	1,3 – 2,25



40

1200 / ,

2,3,4

()

	1200 /
	60
	700 x 800 x 1200
	1,5KW



4

1200 /

40

2,3

SEDAN

	1200 /
	60
	700 x 800 x 1200
	1,5KW

()



/ , 2,3 4 , 40

1200

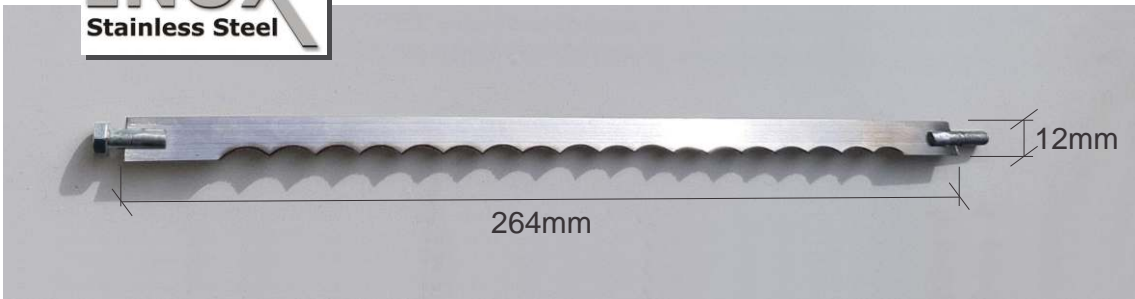
KUS SEDA

	1200 /
	60
	700 x 800 x 1200
	1,5KW



	1.300 /
	190
	960
	1.400
	1,9KW
	380V/50Hz

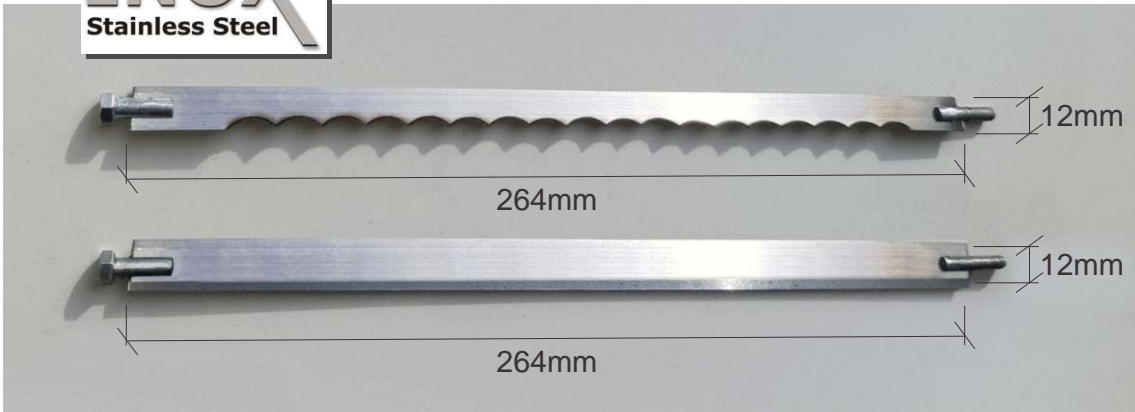
INOX
Stainless Steel



INOX

	264 x 12 x 0,5
	INOX

INOX
Stainless Steel






INOX

	264 x 12 x 0,5
	INOX

| 32000 |



   +381 60 166 66 88

sedan.machines@gmail.com

www.sedan-machines.com



Sedan Cutting Mushroom Machines